

## ROTARY SURAT RIVERSIDE

CLUB NO. 31734 ZONE 5 CHARTER DATE : 26-06-1996

ROTARY YEAR 2002-2003

**Bhichai Rattakul**  
R. I. President

**Jatin Bhatt**  
Dist. Governor

**Rtn. Mukund Jariwala**  
President

**Rtn. Ramesh J. Jaitane**  
Bulletin Editor

We meet every Tuesday at 8.30 p.m. at Dr. Bhacca Rotary Hall, Jeevan Bharti, Surat  
All our meets are Dinner meets.

Bulletin Series: 07-04-27

### Past Meeting...

Yet another combined meeting with Rotary Club of Udhna. The members of both the clubs are getting to form a habit to meet collectively and by all means are enjoying the fellowship together. The neighbor clubs ought to envy & it's the joint clubs pride, isn't it friends?

Welcome speech by President Naresh Bhakta, followed by introduction of the chief Guest & the learned speaker Advocate Mr. Shreyas Desai by Rtn Tasneem Doctor set the ball rolling for the joint meeting. In the absence of our President Mukundbhai, who was on a business trip to North India, Rtn Dr Ajay Bhardwaj took up the charge on the dais.

Mr Desai, who is the president of "Grahak Suraksha Mandal", briefly explained the problems & complaints faced by the consumers towards their sellers of goods & services due to the delay & malfunction of law practices existing in our country. He highlighted the intervention of UNO in framing the laws as per the framework of each country to cater to the benefits of the consumer.

The large crowd present was very much thankful to Mr Desai for having created knowledge of awareness in the field of consumer laws & benefits. Rtn Dr Ajay Bhardwaj proposed the vote of thanks to wind up the meeting.

### Forth Coming Attraction.....Annets Special..... Magic Show.....

To make the impossible happen, to delight the fun loving children... presenting before you the

**Master of Magic Mr Mukund Dalai**

On 24<sup>th</sup> April, Thursday 2003

Venue: Shri K.B.Marfatia Hall, Adarsh, Surat

Time: 7.30pm

*So my young friends don't miss the opportunity for fun & be there on time.*

It is a joint meeting with Rotary Club of Udhna

There will be no meeting on 22<sup>nd</sup> April. The meeting is postponed to 24<sup>th</sup> April

### Rotary's Mission

The mission of Rotary International is to Support member clubs in fulfilling the Object of Rotary by:

- Fostering unity among member clubs
- Strengthening and expanding Rotary Around the World,
- Communication worldwide the work of Rotary, and
- Providing a system of international administration.

### 🌸 Wedding Anniversary 🌸

24-04-03 Rtn. Preeti - Spouse Naresh Jariwala Tel: 3479605 @

24-04-03 Ann. Gracy - Rtn. Stanley Martin Tel: 3233281 @

### Chemistry Of Women

**Name:** Woman

**Symbol:** W

**Occurrence:** Occur whenever men exist

**Physical Properties:** Boil at nothing. Freezes at any time. Melts under sympathetic condition. Very caustic if not treated well.

**Density :** 30-100 kg. Unit. Highly aromatic Polybromatic. Taste subjective.

**Chemical Properties:** Great affinity for gold, silver and precious stones.

Turns red if placed beside a better-looking specimen.

Uses highly ornamental. Useful as tonic for acceleration of spirit. Most effective for reducing income.

**Caution:** most explosive in inexperienced hands.

**HANDLE WITH CARE!**

--Rotary News

### Car - Failure:

There are three engineers in a car; an electrical engineer, a chemical engineer and a Microsoft engineer. Suddenly the car just stops by the side of the road, and the three engineers look at each other wondering what could be wrong.

The electrical engineer suggests stripping down the electronics of the car and trying to trace where a fault might have occurred. The chemical engineer, not knowing much about cars, suggests that maybe the fuel is becoming emulsified and getting blocked somewhere.

Then, the Microsoft engineer, not knowing much about anything, comes up with a suggestion, "Why don't we close all the windows, get out, get back in, open the windows again, and maybe it'll work !?"

### Nature ~~the~~ Bloom.....

Adolescent children are the buds of life, on the verge of blooming into vibrant colours and variety. Amongst this bloom, are a lot of adversities which hamper and affect the ideal natural course for which each one of us in society need to contribute towards their betterment.

Adolescence is characterized by profound

- i. **Biological changes** - the rapid acceleration of skeletal growth and the beginning of physical sexual development signal the biological onset of adolescence.
- ii. **Psychological changes** - the psychological onset is characterized by an acceleration of cognitive development and consolidation and personality formation.
- iii. **social development changes** - a period of intensified preparation for the coming role of young adulthood.

Adolescence is commonly divided into 3 periods: Early [11-14], middle [14-17] and late [17-20], these divisions are arbitrary: growth and development occur along a continuum that varies from person to person.

Puberty, a physical process of change characterized by the development of secondary sexual characteristics, differs from adolescence, largely a psychological process of change. Adolescence terminates in adulthood.

#### **Cognitive and Personality Development:**

At the beginning of adolescence, thinking usually becomes abstract, conceptual and future oriented. Many adolescents show remarkable creativity, which they express in writing, music, art and poetry. Creativity is also expressed in sports and in adolescent interests in the world of ideas such as humanitarian issues, morals, ethics and religion. A major task of adolescence is to achieve a secure sense of self.

#### *Parenting*

The concept of the generation gap between parents and children has emerged from people's experience of being parents of adolescents. The gap represents the difference in experience and perception of life events. For the most part, adolescents are receptive to parental approval and disapproval, and the majority of adolescents and their parents can bridge the generation gap successfully. Among the most common diagnosis are adjustment disorders, anxiety disorders and depressive disorders. These disorders are often associated with delinquent behavior, rebelliousness and academic failure all of which may contribute to family disharmony.

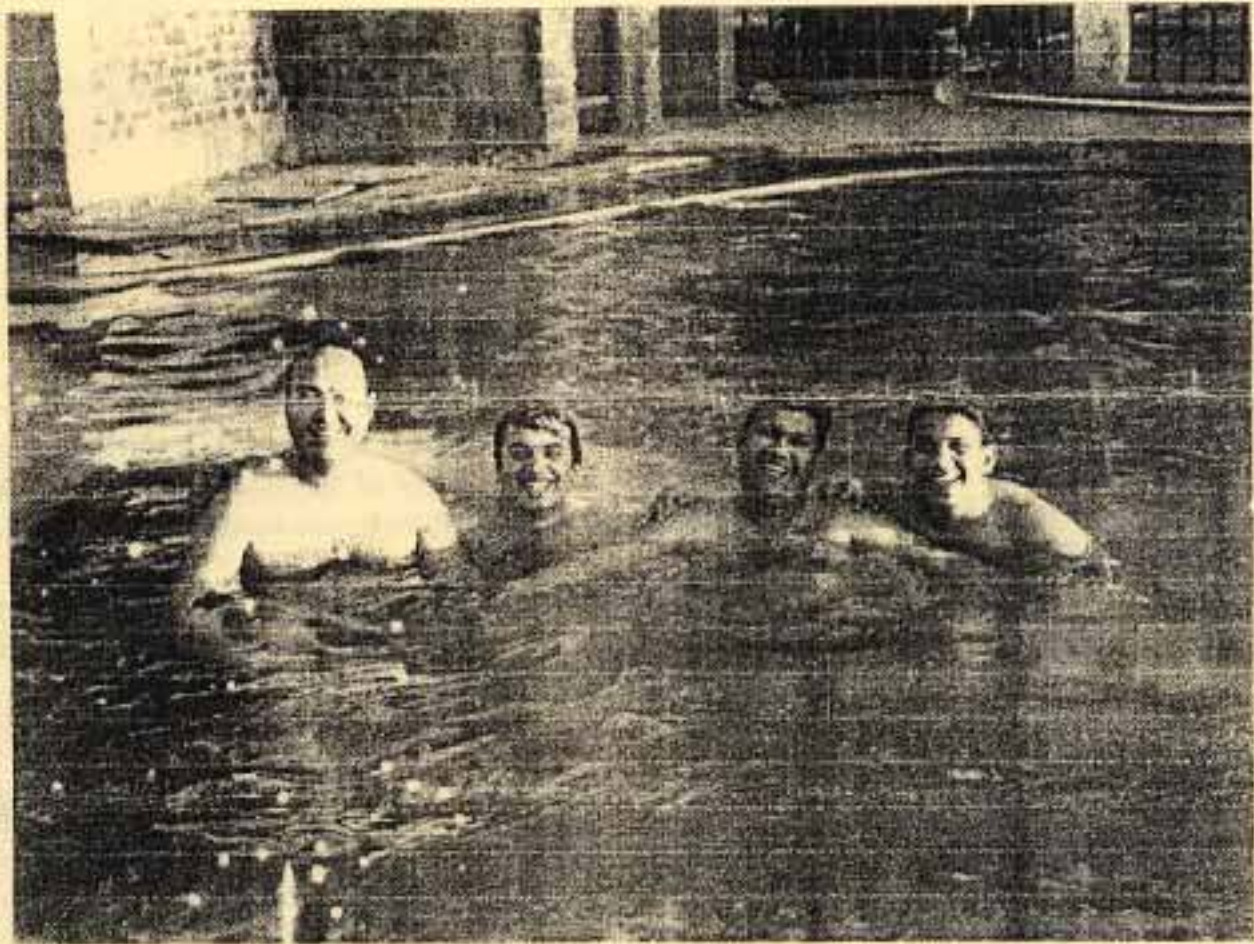
#### **Types of Parenting:**

There are four types of parenting styles:

1. **Authoritarian**, characterized by rigid and strict rules which can lead to depression in children
2. **Permissive**, characterized by indulgence and no limit setting which can lead to poor impulse control
3. **Indifferent**, characterized by neglect and lack of involvement, leading to aggressive behavior
4. **Reciprocal**, characterized by shared decision making with behavior directed in a rational manner, which results in a sense of self reliance

In conclusion, the most effective parenting involves consistency and reward for good behavior and punishment for undesirable behavior, both of which should occur within the context of a warm loving environment.

.....by PP Dr.Sunil D'souza



PP Vishal, Rtn Siddharth, Rtn Amish & Annet Irfan pose for a photograph. They are enjoying the cool waters of the swimming pool at the beach Resort in Daman